

Sectional Rail Couplings

PKP

Application area

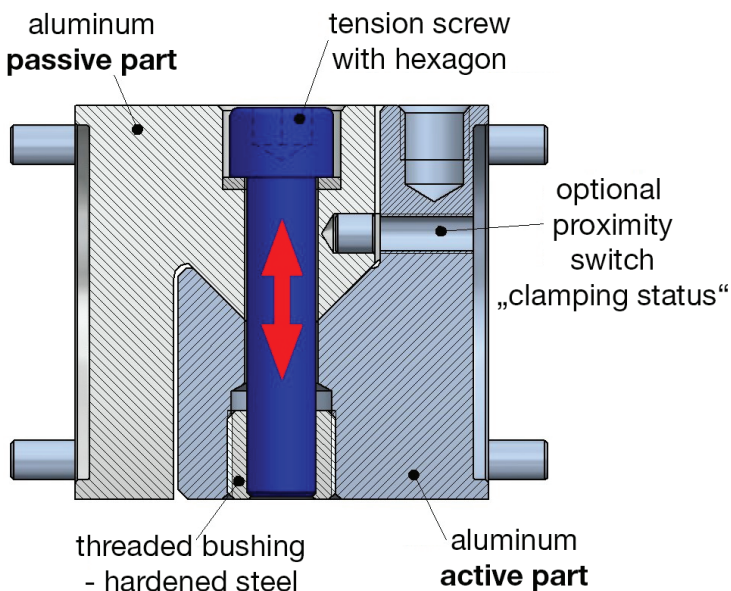
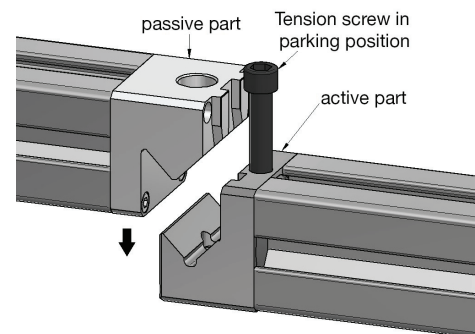
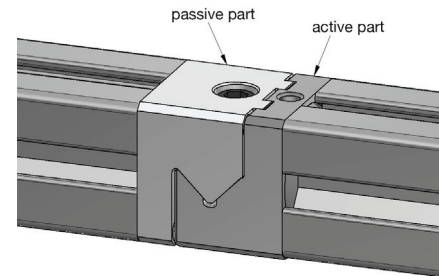
- Connection of sectional rails of different forms and sizes
- Connection of fixtures (e. g. grippers) on handling devices and robots

Description

The PKP type is a so-called prism coupling consisting of an active and a passive part made of high-strength aluminum with a hard-anodized surface.

The clamping principle is very simple - the passive part with exchange rail is placed form-fitting on the active part from above - then only one or two clamping screws must be tightened - the clamping procedure may be checked by the position of the screw head and the tightening torque.

In addition to the user-friendliness and compactness, the low weight of the PKP-type is a highlight.



Advantages

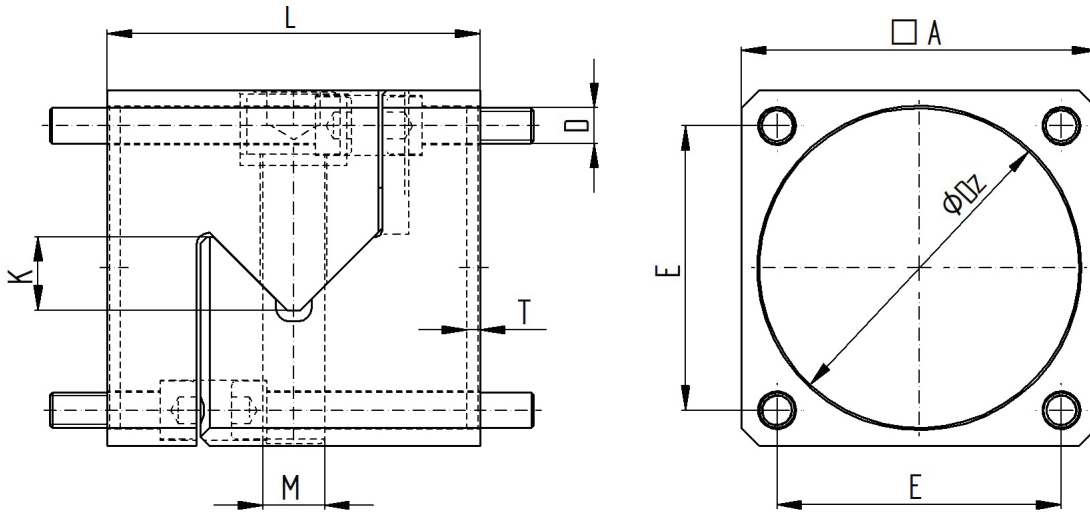
- easy operation
- no operation medium supply necessary
- low weight due to the use of aluminium

Accessories

- optional equipment: proximity switch for monitoring the clamping status

Sectional Rail Couplings

PKP



Example order

Type PKP - manual clamping _____
 Size 120x120 - sectional profile _____
 Active part / passive part _____

PKP - 120 x 120 - active part

designation	operatin forces		bending moment [Nm]	weight [kg]	thread in active part M-TA [Nm]	couple distance K	dimensions [mm]					
	max. axial force [kN]	max. lateral force [kN]					Vkt A	length L	depth T	ØDz H7	bore pattern 4xD	E
PKP 80x80	35	35	1.600	1,6	M14-150	17	80	84	3	72	M8	64
PKP 100x100	50	50	3.200	2,9	M16-200	20	100	99	4	90	M10	80
PKP 120x120	70	70	5.000	4,6	M18-250	20	120	108	4,5	100	M12	96
PKP 140x140	80	80	8.000	8,0	2xM16-200	30	140	137	5	100	M14	112
PKP 160x160	100	100	12.000	11	2xM18-250	30	160	145	6	120	M16	130
PKP 180x180	120	120	14.000	16	2xM20-300	30	180	160	6	140	M20	140
PKP 200x200	140	140	16.000	20,5	2xM20-300	40	200	170	6	160	M20	160