

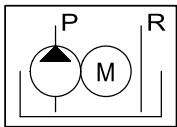
Hydraulic Power Pack

HA

Application area

- For small, medium and large presses
- For providing the operating pressure for hydraulic clamp units
- Recommendable for retrofitting

Mode of operation



- An electrical drive motor (submerged version) drives a radial piston pump which provides the necessary operating pressure of 400 bar. This operating pressure is required to generate and maintain the clamping force.
- The operating pressure is maintained by using pressure switches which restart the pump in case the pressure falls.

Features

Optima hydraulic power packs are characterized by a maximum range of service within a minimum space. Due to their modular design, these units may be adapted to the various requirements starting with the basic unit. The components used, which are items produced by well-known manufacturers, guarantee the reliability of the units.

Basic equipment

- Replaceable filter cartridge
- Pressure switches
- Pressure control valve
- Valve plugs with LED display
- Pressure gauge
- Electrical temperature and level control
- Pressure accumulator



Advantages

- Compact design
- Silent operation
- Modular structure, subsequent expansion possible
- Prepared for ground mounting
- Quick and easy to install

Accessories

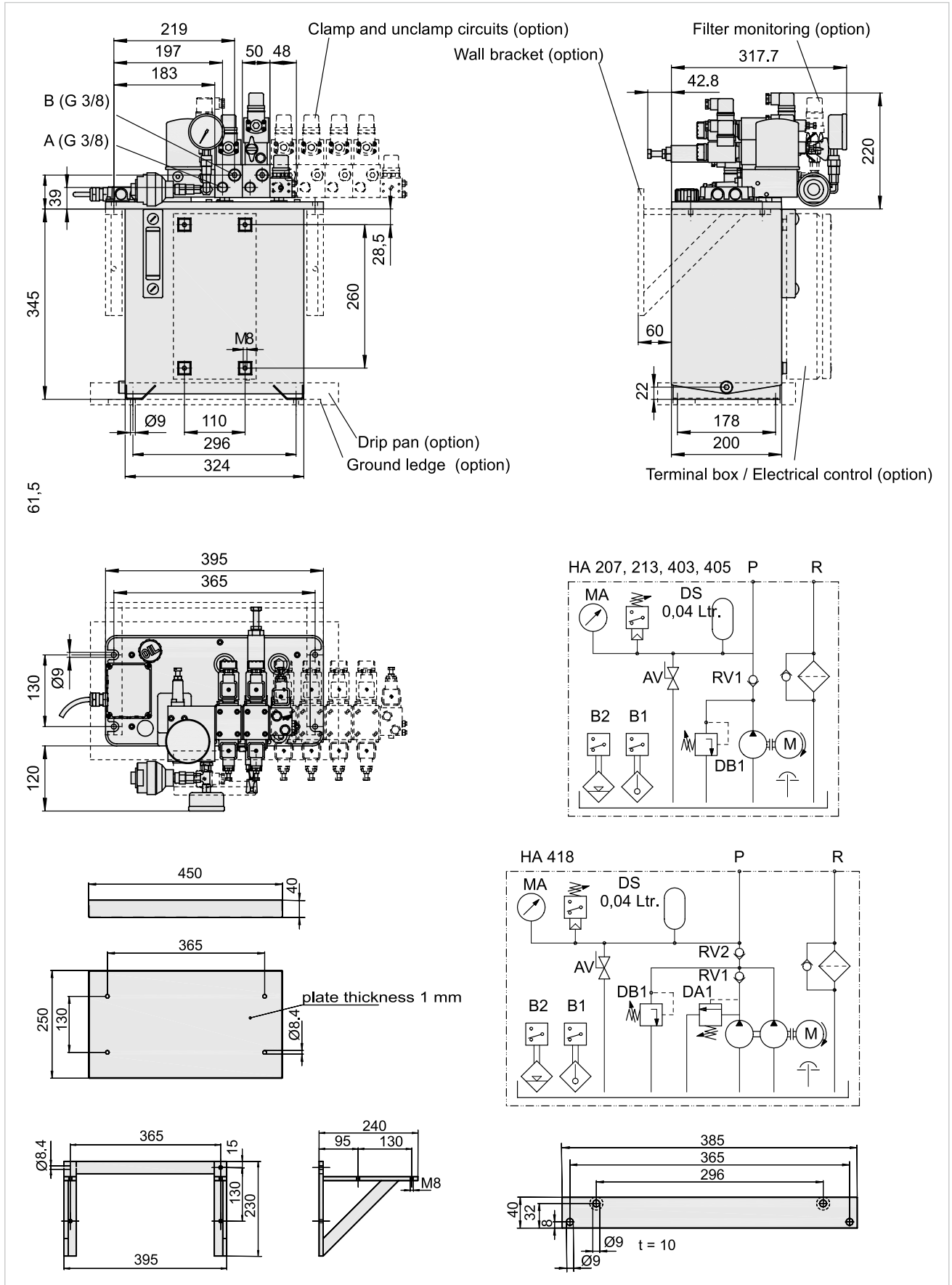
- Valves
- Fittings
- Hydraulic hoses / Hydraulic accessories
- Plug connectors / Cables
- Drip pan
- Brackets for wall mounting

Technical Data

Type	HA207	HA213	HA403	HA405	HA 418
Pump feed volume [l/min]	6,5	13	2,5	5	18 (< 120 bar) 5 (> 120 bar)
Nominal pressure [bar]	200		400		
Max. setting pressure [bar]	200		420		
(Motor) output [kW]	2,1	3	2,1	3	
(Motor) speed rpm [1/min]	1360	2815	1360	2815	
Filter	F1	F2	F1	F1	F2
Piston diameter [mm]	16		10	10	16
Number of pistons	3				
Motor voltage	400 V 50 HZ				
Control voltage	24 V DC				
Tank volume [l]	15				
Useful volume [l]	6				

Hydraulic Power Pack

HA

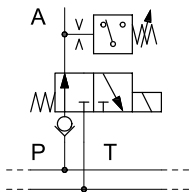


Hydraulic Power Pack

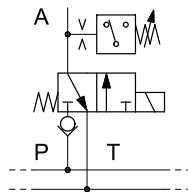
HA

Available Valve Units

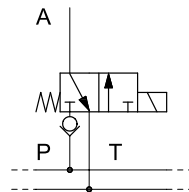
Type 1



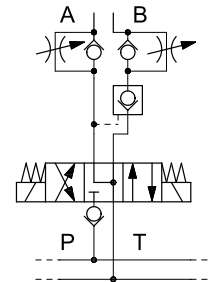
Type 2



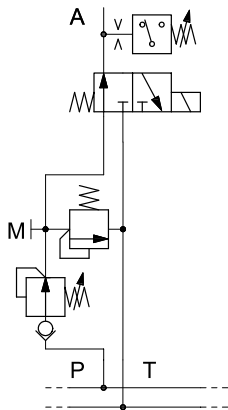
Type 3



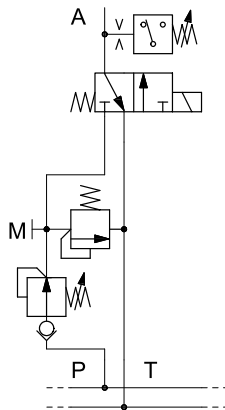
Type 4



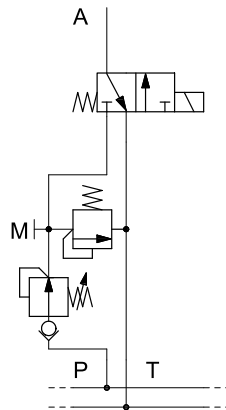
Type 5



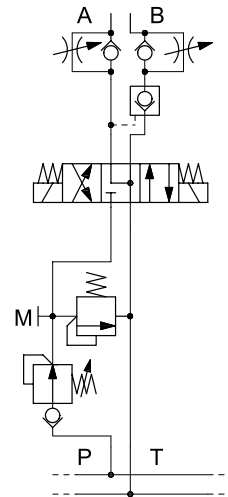
Type 6



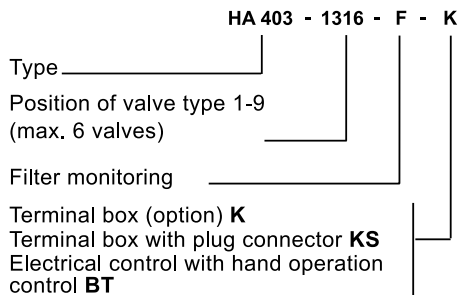
Type 7



Type 8



Example order



Type 9



Filter monitoring

