

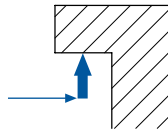
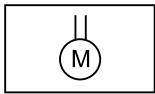
Flexible Clamp System

EVS with EBS

Application area

- For medium and larger presses (large panel progressive presses and transfer presses)
- For clamping dies with different sizes and clamping dimensions
- For clamping upper dies
- For dies with straight clamping edge
- Also suitable for retrofitting

Mode of operation

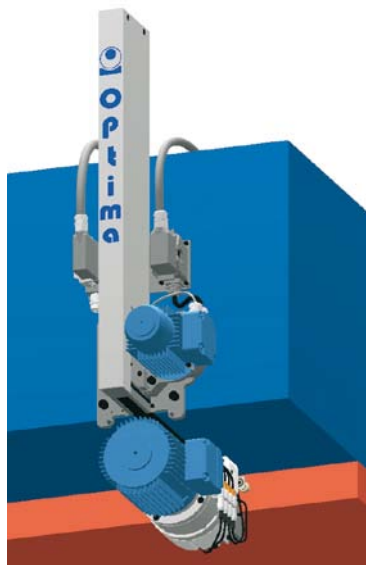


- The electric positioning unit moves the electromechanical block clamp unit along the T-slot.
- The clamping force is generated by an electric drive and a toothed gearing.

Description

The electric positioning unit moves the block clamp unit by means of a spindle and spindle nut. A second electric motor generates a spindle stroke by means of a gear drive which rotates the angle-shaped clamping jaw on its pivot bearing. The force generated thereby is transferred onto the die clamping edge. Unclamping is achieved by reversing this sequence. This systems allows short clamping and unclamping time with medium clamping dimension tolerances.

All functions are monitored by limit switch signals. The clamping force is continuously monitored. The electric positioning units may be switched off individually by the machine control so that these clamp units remain in their park position.



Fixing is achieved with four hexagon head screws M12x30, strength class 8.8. (not included).

1) Mechanical damage may occur at higher load.



Advantages

- Clamping of different die sizes
- Short clamping and unclamping time
- Mechanically self-locking
- Displacement path up to 800 mm available
- All important functions electrically monitored
- Continuous clamping force monitoring
- High automation level
- Central operation
- High mechanical loading force

Accessories

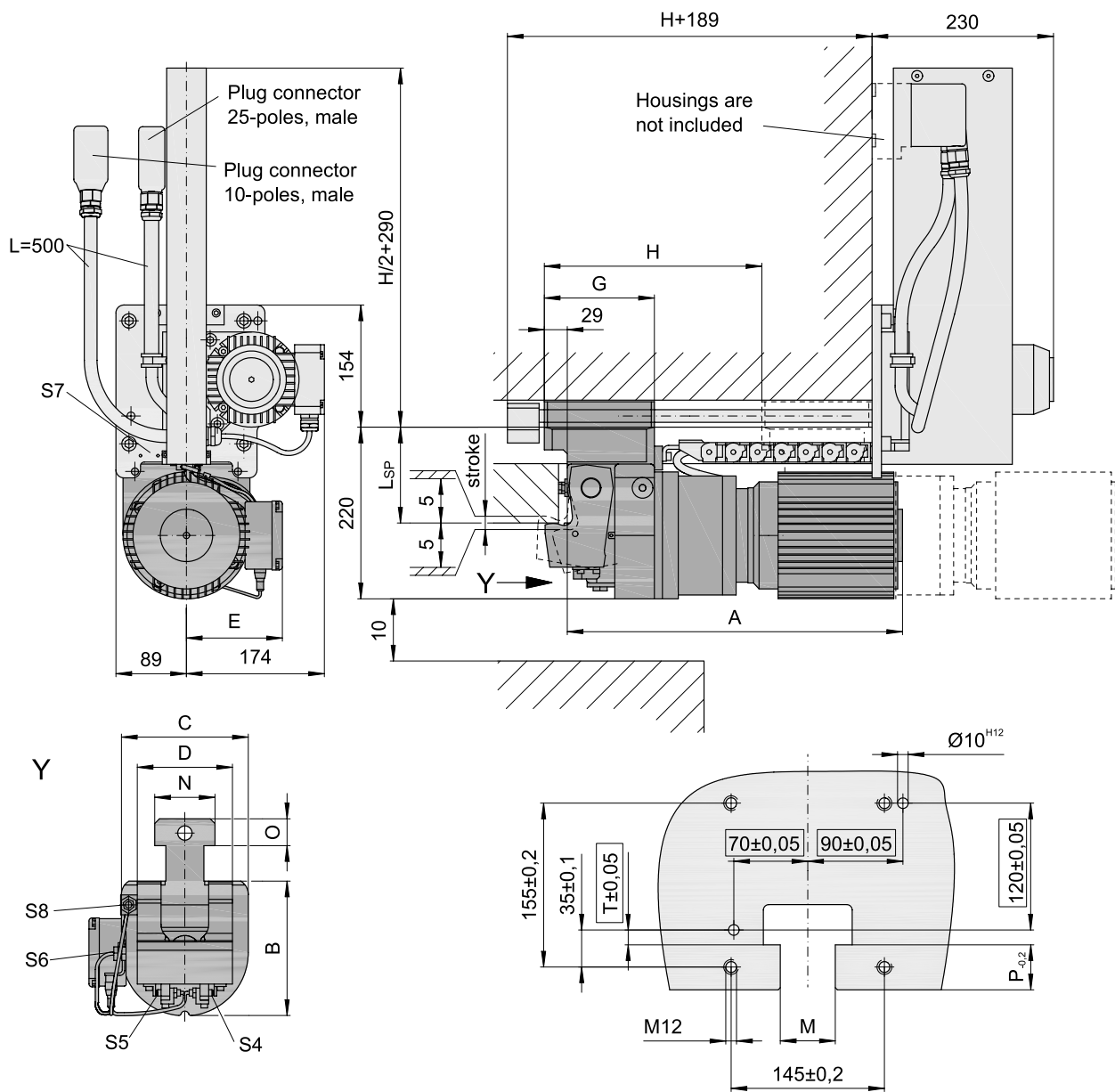
- Limit switches / cable
- Plug connectors
- Motors

Technical Data

| Positioning Unit | EVS | | |
|---------------------------------------|--|------|-----|
| Motor: Type | three-phase | | |
| Supply voltage | 400 V 50 HZ | | |
| Motor power [W] | 60 | | |
| Limit switches: Type | <ul style="list-style-type: none"> • Inductive proximity switches | | |
| Switch voltage | <ul style="list-style-type: none"> • PNP normally open; 10-30V DC | | |
| Designation | <ul style="list-style-type: none"> • Clamp unit in park position | S7 | |
| | <ul style="list-style-type: none"> • Clamp unit at the die edge | S8 | |
| Plug connector | Han® 25 D Han® 10 E | | |
| Clamp Unit | EBS | | |
| Clamping force [kN] | 60 | 120 | 240 |
| Max. loading force [kN] ¹⁾ | 100 | 200 | 450 |
| Motor: Type | three-phase | | |
| Supply voltage | 400 V AC | | |
| Motor power [kW] | 0,55 | 0,75 | 1,5 |
| Limit switches: Type | <ul style="list-style-type: none"> • Inductive proximity switches | | |
| Switch voltage | <ul style="list-style-type: none"> • PNP normally open; 10-30V DC | | |
| Designation | <ul style="list-style-type: none"> • Clamping jaw within the permissible clamping range | S4 | |
| | <ul style="list-style-type: none"> • Clamping jaw released | S5 | |
| | <ul style="list-style-type: none"> • Continuous clamping force monitoring | S6 | |
| Clamping dimension tolerance [mm] | +/- 5 | | |
| Max. operating temperature [°C] | 70 | | |
| Weight [kg] | 53 | 56 | 58 |

Flexible Clamp System

EVS with EBS

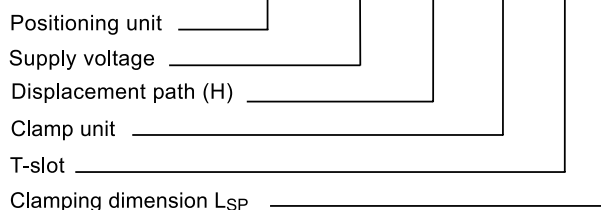


| T-slot | M | N | O | P | T |
|--------|----|----|----|----|----|
| 36 | 36 | 52 | 24 | 36 | 24 |
| 42 | 42 | 64 | 32 | 46 | 14 |
| 48 | 48 | 76 | 34 | 44 | 16 |

(Custom designs available on request)

Example order

EVS - 400V 50 Hz - 550 - EBS120 - 48 - 120



| Type | A | B | C | D | E | G |
|---------------|------------|-----|-----|-----|-----|-----|
| EVS / EBS 60 | 395 | 170 | 160 | 120 | 110 | 139 |
| EVS / EBS 120 | 420 | 170 | 160 | 120 | 125 | 139 |
| EVS / EBS 240 | on request | | | | | |